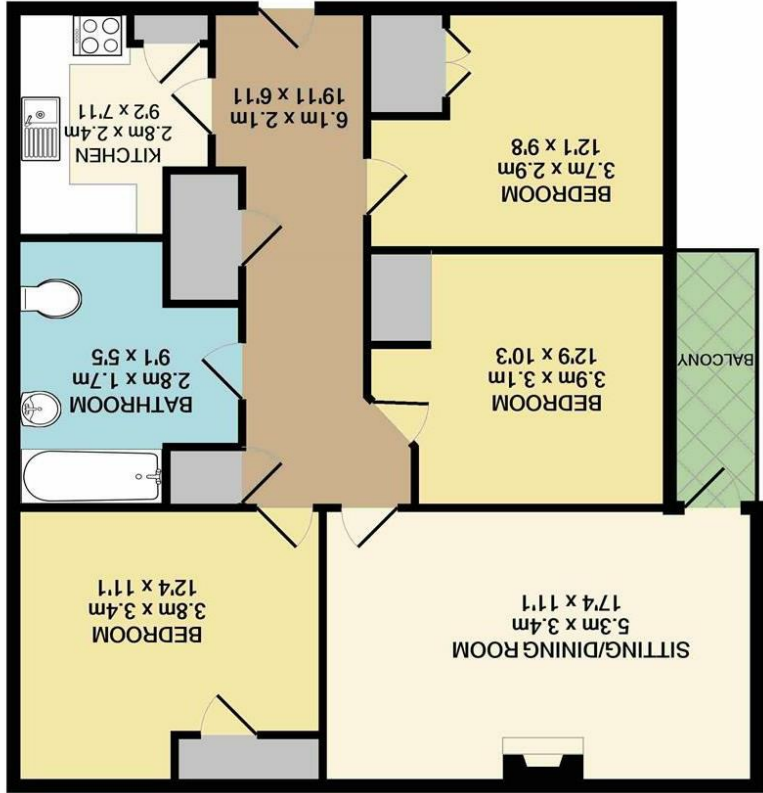


Whilst every attempt has been made to ensure the accuracy of the floor plan contained here, measurements of doors, windows, rooms and any other items are approximate and no responsibility is taken for any error, omission, or mis-statement. This plan is for illustrative purposes only and should be used as such by any prospective purchaser. The services, systems and appliances shown have not been tested and no guarantee as to their operability or efficiency can be given.
 Made with Metropix ©2021

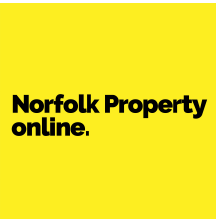
TOTAL APPROX. FLOOR AREA 84.0 SQ.M. (904 SQ.FT.)



Energy Efficiency Rating	
Potential	Current
79	71

England & Wales	
EU Directive 2002/91/EC	
Not energy efficient - higher running costs	(1-20)
	(21-30)
	(31-40)
	(41-50)
	(51-60)
	(61-70)
	(71-80)
	(81-90)
Very energy efficient - lower running costs	(91-100)

Disclaimer - In accordance with the Property Misdescriptions Act, the company gives notice that all descriptions, references to condition, necessary permissions for use and other details are given in good faith and believed to be correct, but any intending lessees do not rely on them as statements of fact, but must satisfy themselves by inspection or other means, as to their accuracy.



Cherry Close | Norwich | NR1
Guide price £170,000

Norfolk Property Online presents this generous, top floor apartment. Located within a quiet residential close within easy reach of Norwich City Centre this home is an ideal opportunity for any first-time buyer or buy-to-let investor. With accommodation comprising of an inviting entrance hall, spacious lounge diner, with access to a private balcony,

The property benefits from a separate kitchen, family bathroom and three double bedrooms. Outside the property also benefits from access to communal gardens/outdoor green space at the front and back and a private storage shed downstairs suitable for storing bikes.

Having been exceptionally well maintained and improved by the current owners, this home demands an internal inspection to be appreciated.

